

GPS Tracker

Manual

Model:MT08A

<Version 6.2_2016/8/24>



Please read this manual carefully before attempting installation and online activation. Pictures are for indication and illustration purposes only.

Accessories:

Power cables



Relay



1. Functions

- GSM 850/900/1800/1900MHz
- Voltage: 9-100 V DC
- GPS location, GPRS timing report
- Inquires the position by SMS or mobilephone or PC
- Built-in vibration sensor, vehicle anti-theft
- ACC ignition signal detection, vehicle state hint
- Can remote control vehicle cut-off oil or electric
- Power cut-off alarm

2. Specification

GSM: 850/900/1800/1900MHz

GPRS: Class 12, TCP/IP

Voltage: 9-100V DC

Current: $\approx 22\text{mA}$ (12vDC)

$\approx 12\text{mA}$ (24vDC)

GPS fixed time: Cold start 30sec(open sky)
Warm start 29sec(open sky)
Hot start 5sec (open sky)

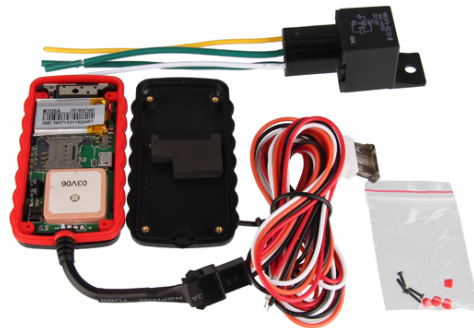
GPS fixed precision: 10m (2D RM)

Temperature: $-20^{\circ}\text{C} \sim +70^{\circ}\text{C}$

Humidity: 5% \sim 95% RH

Dimension: 90.0(L)x48.0(W) x16(H)mm

Weight: 80g



3. Installation steps

1. Insert GSM simcard, and note down the IMEI Number of tracker

2. Switch on the tracker (There is one small switch button on PCB)

3. Install wire cables & relay according to wiring diagram

4. Set tracker by sending sms (Set center number/apn name)

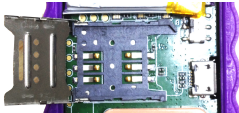
5. Forward the IMEI numbers to us, we will add to our platform and provide account/password

Prepare

- 3.1.1 SIM Card: Please use a GSM SIM card (2G, 3G or 4G mixed with 2G)
- 3.1.2 Before insert the SIM card, be sure to turn off the device.
- 3.1.3 Be sure the GPRS of simcard is available; if not, please contact the simcard Provider.
- 3.1.4 Be sure the sms function of simcard is available.

3.2 Simcard installation and switch on tracker:

1). Open the case of GPS



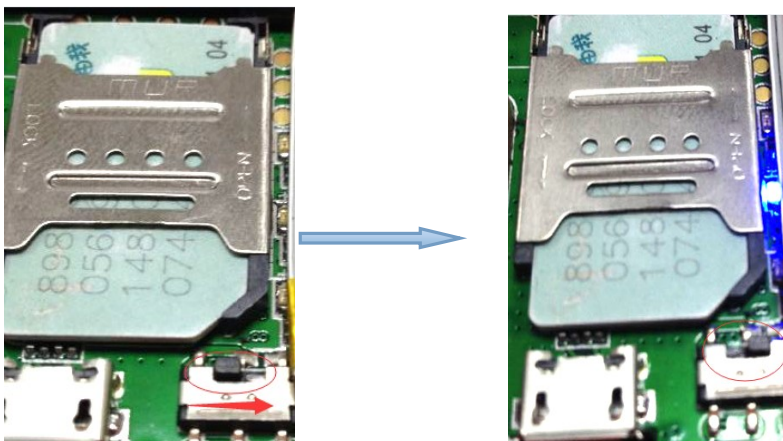
2). Insert GSM simcard



3). Cover the case of GPS



2). Switch on tracker:



3.3 Installation

Please pay attention to the following matters:

- 3.3.1 Concealed installation for avoid the thieves damage.
- 3.3.2 Avoid install together with the RF source, such as reversing radar, alarm and other vehicle communication equipment.
- 3.3.3 Can use ribbon or wide sponge strength double-faced adhesive stick to fix.
- 3.3.4 Equipment with GSM antenna and GPS antenna, installation shall ensure that face up (skyward), and above no metal barrier shield, suggest installation position:
 - Front windshield decorative below the covert,
 - Front panel (skin for non-metal material) around the shadow
 - Rear window below decorative

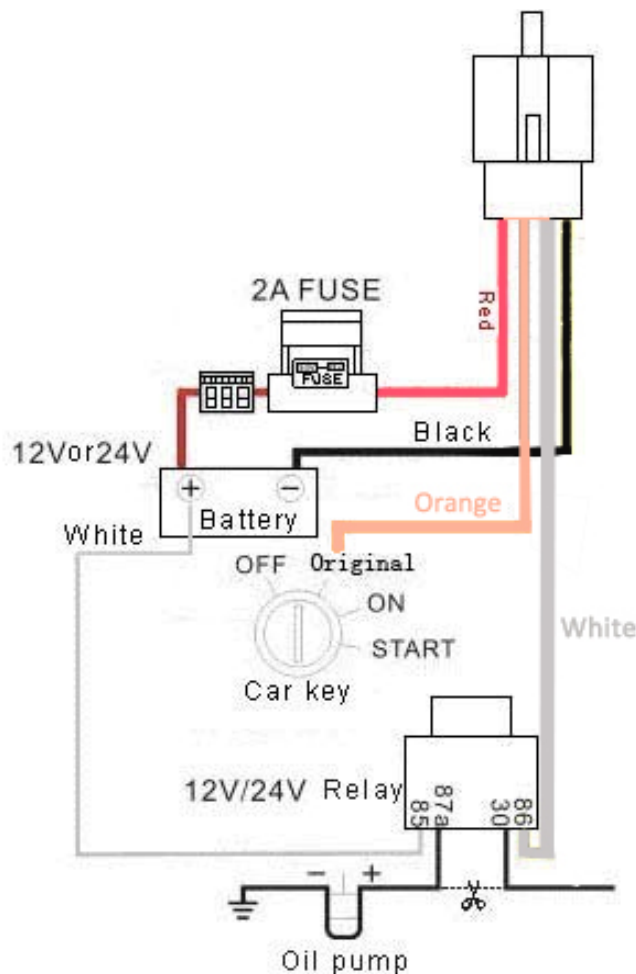
3.4 Relay connection commands

Oil pump cut-off relay connection method: Coil ends connection were white line (85) and the yellow line (86), white line (85) joint car positive (+ 12 v), the yellow line (86) joint device relay control line.

The vehicles on the tubing string attached to oil pump, cut the wire of oil pump positive, the wire of oil pump positive joint the normally closed end of the relay (green line 87 a), the other end joint the relay's other end (green line 30).

Note: this product with standard for 12V relay. Fit for installation on 12V car battery vehicles. If the battery of the vehicle is 24Vs battery, need to be choose 24V relay.

3.4 Device connection diagram



4. Settings by sending SMS:

4.1 If use tracking platform, please send us your GPS IMEI number/ID number, so we will open account for you to login our tracking website: <http://www.twogps.com> (demo account: 888, password: 123456). In addition, you can click on the "Android"/"Iphone" to download the app for smartphone. (Server: www.twogps.com, with same accounts as tracking website).

Download IOS app from App store: Research by "TWOGPS"

4.2 All commands will be replied by tracker. If set successful it will reply "set **** ok!" otherwise need to check the format and set again. Send the corresponding commands, the device will reply the

corresponding results.

4.2.0 Set the center number:

Notes: If you want to use SMS to set device's working parameter or control the device, you must set the center number first. Device only accept SMS commands from the center number, you can set your mobile phone number as the center number(country code is needed in front of the center number.Example, code for China is :+86 ,so you can set the center number to be: +8613800138000 .

The center number command: `Center,A,number#`

Example: `Center,A,+8613800138000#`

If the service center number is set successful, the device will reply: SET CENTER TEL OK!

Note: All the other sms commands should be set by the center number

4.2.1 Language setting:

Format1:`LANG,1#` (The replied sms from tracker will be in Chinese)

Format2:`LANG,0#` (The replied sms from tracker will be in English)

4.2.2 APN setting:

Format1 (APN with username and password):`APN,apnname,user,password#`

Example: `APN,intenet,123,123#`

Format2(without username/password):`APN,apnname#`

Example: `APN,cmnet#`

4.2.3 TIMER SETTING(when vehicle is moving):

Format:`TIMER,10#`

Means GPRS data will be transmitted to server every 30 seconds,timer should be 10~60(unit:seconds)

Default:10 seconds ,when timer is :0 ,means it wont send GPRS data when moving.

5.1Led status:

LED scintillation state meaning interpretation

LED	Scintillation state	Meaning
Red Power LED	On	Connected with power
	off	No connected with power
Blue GSM LED	on	GSM signal fine
	flashing	GSM not ready
Green GPS LED	On	GPS signal fixed
	flashing	GPS not ready

5.2 Commands List

1)CENTER		
Text command	Parameter	Example
CENTER Add	CENTER,A,number#	CENTER,A,13500135000#
CENTER Del	CENTER,D#	CENTER,D#
Command Description	1)Center number can control the oil and power and resume factory settings 2) Center number can receive the call and text of vibration alarm and over speeding alarm. 3) SIM must display the income call number to control oil and power. 4) Only one number can be center number. 5) Change center number must resend the command. 6)Add new center number by CETNER,A, and delete by CENTER,D	
Command Feedback	Successful Setting: SET CENTER TEL OK!	

2)APN		
Text command	Parameter	Example
APN Setting	APN,apn[,username, password]	1: APN,intenet,123,123# 2: APN,cmnet#
Command Description	APN differs according to the local telecom operators. For example: APN request password, please refer to Example1, and Example2 for no password.	
Command Feedback	Successful Setting: SET APN OK!	

3)TIMER		
Text command	Parameter	Example
TIMEER Parameter setting	TIMER, uploading interval#	TIMER,30#
Command Description	Time scope: 0, 10~60 seconds; 0,no data uploading; 10~60,means time interval; the default value is 10 seconds!	
Command Feedback	Successful Setting: SET TIMER OK!	

4)RELAY		
Text command	Parameter	Example
RELAYParameter1	RELAY,1#	RELAY,1# cut off oil / power
RELAYParameter2	RELAY,0#	RELAY,0# recover oil / power
Command Description	1)RELAY control the start and closeness of the relay 2) Only the center number can operate. 3) the device only cut off the oil circuit on the condition of the speed below 20KM/H 4)When send the command, the device will reply "please waiting "When the vehicle speed is over 20KM/H, the device will cut off the oil or the power when the speed below 20KM/H.	
Feedback	Successful Setting: Relayed enable OK!	

5)SERVER «If user use our platform,no need to set Ip/port any more»		
Text command	Parameter	Example
SERVER Parameter	SERVER,83466207,domain,port#	SERVER, 83466207,www.twogps.com,8083#
Command Description	Change the domain and port when move to a new server port: 10~65535	
Command Feedback	Successful Setting: SET SERVER OK!	

6)GMT		
Text command	Parameter	Example
GMT Parameter	GMT,location, time zone[,half time zone]#	GMT,E,8# GMT,E,5,30#
Command Description	The default time zone is Beijing time. If time zone need revised, please operate according to the above command.	
Command Feedback	Successful Setting: SET GMT OK!	

7)VIBRATION		
Text command	Parameter	Example
VIBRATION Parameter	VIBRATION, alarming level[,alarming way]#	1)VIBRATION,2,3# 2)VIBRATION,2#
Command Description	the sensitivity value of the vibration is from 1 to 5, 1 is the most sensitive and 5 is close. Alarming ways: 1, calling 2, texting, 3 calling and texting. Must set the center number and receiving number. When there is motion,GPS will make VIBRATION alarm after vehicle stopped over 5 minutes	
Command Feedback	Successful reply: SET VIBRATION OK!	

8)SPEEDING		
Text command	Parameter	Example
SPEEDING Parameter	SPEEDING, speed [alarming way]#	1)SPEEDING,120,3# 2)SPEEDING,120#
Command Description	The speed scope is form 60-220, if the speed is nothiscope, the alarm is off. Alarming : 1, calling 2, texting, 3 calling and texting. Must set the center number and receiving number.	
Command Feedback	Successful Setting: SET SPEEDING OK!	

9) Power supply cut off alarm by SMS		
Text command	Parameter	Example
Power supply cut	Power0# (Default) Power1#	1)Close the sms alarm when cut off power supply 2) Open the sms alarm when cut off power supply
Command Description	When power supply is cut off,GPS will make alarm by sending to centerphone number.	
Command Feedback	Successful Setting: SET power alarm OK!	

10) Open/Close GPS sleep mode		
Text command	Parameter	Example
Power supply cut	slpon# slpoff# (Default)	1) Open GPS sleep mode when vehicle not moving 2) Close GPS sleep mode when vehicle not moving
Command Description	-Open this function,GPS module be in sleep mode when vehicle is stopped,used for motorcycles/bikes' battery power saving. -Close this function,GPS module will work all the time,suitable for cars/trucks	
Command Feedback	Successful Setting: SET power alarm OK!	

11) External power supply low battery alarm		
Text command	Parameter	Example
Lower alarm	lower,value#	1)lower,0# close this function(default) 2)lower,7# Value voltage (7~45 V).
Command Description	when power supply voltage is lower than the value,GPS will make alert by sending SMS to center phone.	
Command Feedback	Successful Setting: SET lower alarm OK!	

12)RESET		
Text command	Parameter	Example
RESET	RESET#	RESET#
Command Description	Reset the device	
Command Feedback	Successful Setting: RESET OK!	

13)FACTORY		
Text command	Parameter	Example
FACTORY	FACTORY#	FACTORY#
Command Description	Restore the factory setting Only center number can initial this function Factory setting will recover to the original setting	
Command Feedback	Successful Setting: FACTORY OK!	

14)LANG		
Text command	Parameter	Example
LANG Parameter	LANG,1# LANG,0#	LANG,1# 1:CHINESE, 0: ENGLISH
Command Description	; When check the location, it will reply the Chinese location in Chinese language setting; while reply the URL link when in English language setting.	
Command Feedback	Successful Setting: SET LANG OK!	

Inquires the class instruction

15)WHERE

Text command	Parameter	Example
WHERE	WHERE#	WHERE#
Command Description	Check the longitude and altitude and other information of the device	
Command Feedback	Reply with longitude and altitude, speed and IMEL.	

16)123

Text command	Parameter	Example
123	123	123
Command Description	Check the current location	
Command Feedback	When check the location, it will reply the real address location by sms in English,also with URL link	

17)URL

Text command	Parameter	Example
WHERE	URL#	URL#
Command Description	Check the location link of Google map	
Command Feedback	<Datetime:12-07-05 13:21:30> http://maps.google.com/maps?q=N22.540885,E113.95265	

18)NUMBER

Text command	Parameter	Example
VERSION	NUMBER#	NUMBER#
Command Description	The command is to check the CENTER NUMBERS	
Command Feedback	Center number:Xxxx	

19)VERSION

Text command	Parameter	Example
VERSION	VERSION#	VERSION#
Command Description	The command is to check the software version	
Command Feedback	VERSION:Xxxx BUILD:2016-01-12 10:12	

20)PARAM

Text command	Parameter	Example
PARAM	PARAM#	PARAM#
Command Description	The command is to check the settings and the default parameter.	
Command Feedback	IMEI:351190012535936 APN:cmnet IP:IP and port TIMER: moving uploading interval	CENTER: center number Language(CN/EN) GMT: time zone (E/W8) STATIC: static uploading interval

21)STATUS

Text	Parameter	Example
------	-----------	---------

command		
STATUS	STATUS#	STATUS#
Command Description	The command is designed for checking the device's working status.	
Command Feedback	BATTERY:100% GSM Signal: MIDDLE GPS:FIXED GPS Signal: MIDDLE RELAYER:DISABLE CHARGER:NORMAL	-- Battery status (SOC) --GSM Signal strength --GPS Location condition --GPS Signal strength -- Oil circuit state -- Circuit state
22)SIMCARD Balance check		
Text command	Parameter	Example
FEE	FEE,Service NUMBER,Command content#	FEE,10086,CXYE#
Command Description	The command is used to check balance of simcard in GPS device	
Command Description	<p>Service Number:It is the service number of simcard operator Command content:It is the SMS content used for user to check balance of simcard by sending sms to service number.</p> <p>Example: FEE,10086, CXYE#</p> <p>In China,we need to send sms: CXYE To 10086 CXYE is the SMS content for user to check balance 10086 is Service number of SIM provider # is the ending character</p>	

6.Tracking online

Login our platform or app from:www.twogps.com

Platform video : <https://youtu.be/EW4IXZgixSA>